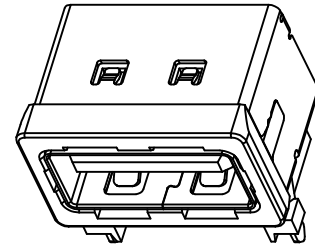
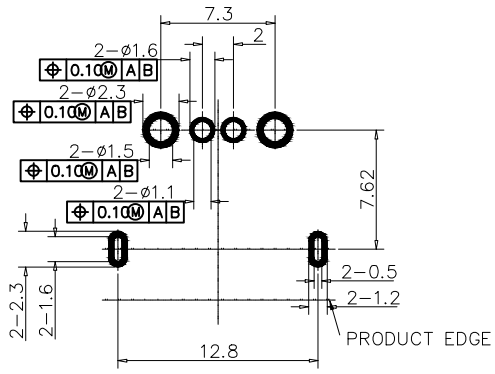
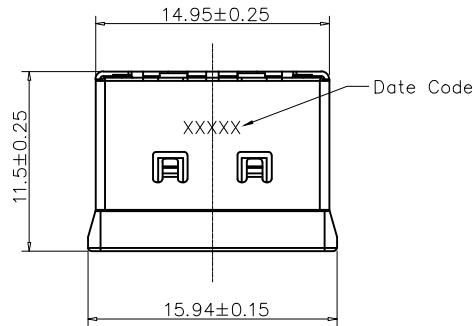
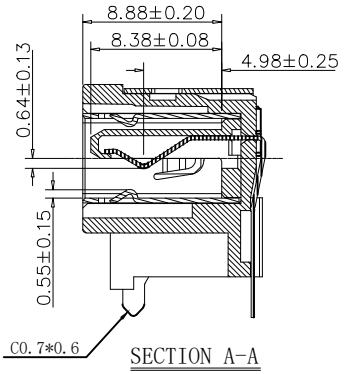
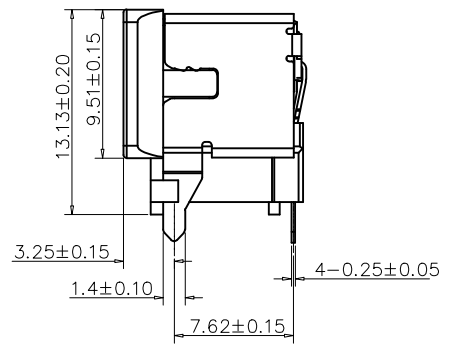
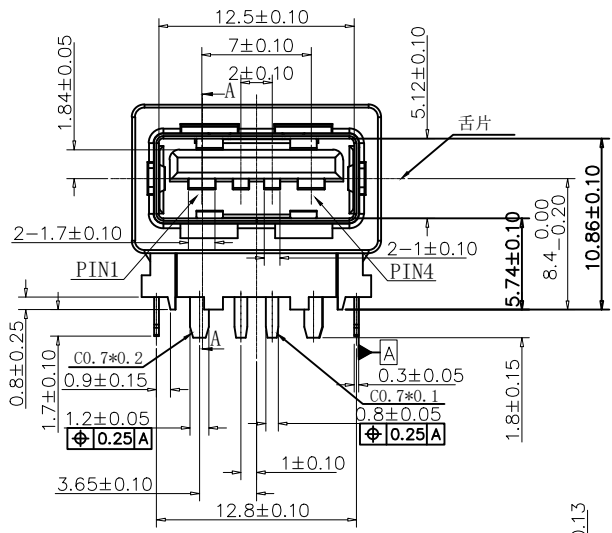


REV.	ECN NO.	DESCRIPTION	DRAW	APPD.	DATE
A	---	新版本发行	LIU MIAO		2019.09.24



-----PCB Layout-----



NOTES:

- MATERIALS AND FINISHES:
 - 1-1. HOUSING MATERIAL: UL 94V-0 LCP.
 - 1-2. COVER MATERIAL: UL 94V-0 LCP.
 - 1-3. CONTACT MATERIAL: C7025
FINISH: CONTACT AREA: GOLD PLATING 3u"MIN. AND SOLDER TAIL: MATTE TIN 100u" Min. PLATING ON TOP OF NICKEL 50u"MIN.
 - 1-4. SUB SHELL MATERIAL: C2680 Ni 50u"MIN.
 - 1-5. MAIN SHELL MATERIAL: SUS 304.
- ELECTRICAL CHARACTERISTICS:
 - 2-1. CONTACT CURRENT RATING: 8A
 - 2-2. CONTACT RESISTANCE: 20 mΩ MAX FOR INTAIL. 10 mΩ MAX CHANGE AFTER DURABILITY TEST.
 - 2-3. DIELECTRIC WITHSTANDING VOLTAGE : 500 VAC MIN.
 - 2-4. INSULATION RESISTANCE: 500 MΩ MIN.
- MECHANICAL CHARACTERISTICS:
 - 3-1. CONTACT MATING FORCE: 6N~25N.
 - 3-2. CONTACT UNMATING FORCE: 10N~25N FOR INTAIL.
 - 3-3. DURABILITY: 3000 CYCLES. 8N~25N AFTER TEST.

TOLERANCE		WFD CONN 深圳市旺富达电子有限公司 SHEN ZHEN WFD ELECTRONICS CO., LTD							
X.X ±0.30	X.* ± 2'	PART NO.	TITLE:						
.XX ±0.20	.X' ± 1'	USB-AF2004-071H-08	USB 2.0 A F 带塑胶护套						
.XXX ±0.10	.XX' ±0.5'	APPD:	DRAWG NO.						
UNITS	mm	CHEG: DAVID	<table border="1"> <tr> <td>SCALE</td> <td>SHEET</td> <td>REV.</td> </tr> <tr> <td>1:1</td> <td>1/1</td> <td>A</td> </tr> </table>	SCALE	SHEET	REV.	1:1	1/1	A
SCALE	SHEET	REV.							
1:1	1/1	A							
MATERILA		DRAW: LIU MIAO							
FINISH									