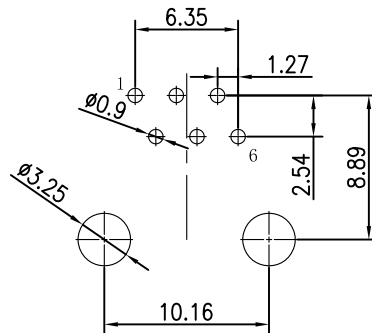
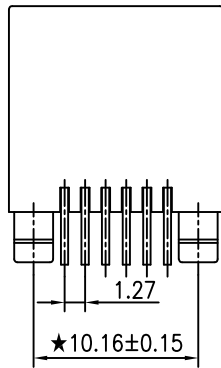
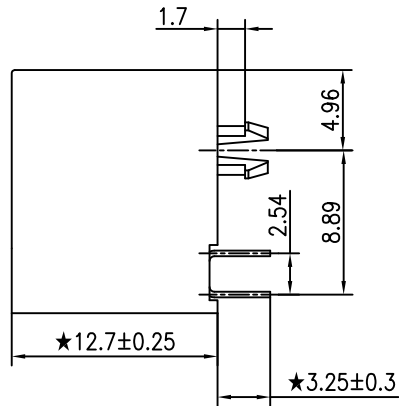
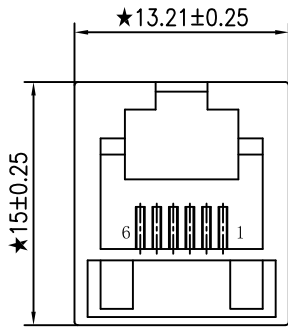


RoHS
Compliant



P.C.B LAYOUT TOP VIEW

NOTES

MECHANICAL:

1. HOUSING MATERIAL: PBT BLACK UL94V-0
2. INSERT MATERIAL: PBT BLACK UL94V-0
3. CONTACT MATERIAL: PHOSPHOR BRONZE T=0.35mm.
4. PLATING: GOLD PLATING AT CONTACT AREA, MATTE TIN AT TAIL 100u" MIN, NICKEL 30u" MIN. OVER ALL
5. OPERATING LIFE: 750 CYCLES MIN.
6. MATING/UNMATING FORCE: 30N/3.06KGf MAX
7. RETENTION STRENGTH: 50N MIN. FOR 60S±5S

ELECTRICAL:

1. VOLTAGE RATING: 125 VAC RMS.
2. CURRENT RATING: 1.5 AMP.
3. CONTACT RESISTANCE : 30mΩ MAX.
4. INSULATION RESISTANCE: 1000MΩ MIN. AT 500V DC .
5. DIELECTRIC STRENGTH: 1000V AC OR 1500V DC RMS AT 0.5mA 50Hz/60Hz FOR 1MINUTE.

ENVIRONMENTAL:

1. STORAGE: -40°C TO +85°C RELATIVE HUMIDITY<80%.
2. GUARANTEE PERIOD: 12 MONTHS
3. OPERATION: -40°C TO +85°C.
4. The mark with ★ is the key inspection dimension for QC

NO.	PACKING	PART NO.	Gold Plating
1	TRAY		1u"
2			1.5u"
3			3u"
4		WFD52F511SX004201111010	6u"
5		WFD52F511SX005201111010	15u"
6		WFD52F511SX006201111010	30u"
7		WFD52F511SX007201111010	50u"

DATE	REV	DESCRIPTION	CHECK	APPROVAL	TOLERANCES
					.X ±0.30
					.XX ±0.25
					.XXX ±0.10
					PROJECT

WFDCONN 深圳市旺富达电子有限公司
SHEN ZHEN WFD ELECTRONICS CO., LTD

APPROVAL	CHECK	DRAWN	DATA
DAVID	SIMON	LIU MIAO	2021/07/06

TITLE			
RJ11 JACK 1X1 6P6C 全塑 无边 无台阶 H=12.7mm			
PART NO.			
SEE TABLE			
UNIT	SCALE	CHECKED	REV
MM	1:1		A4