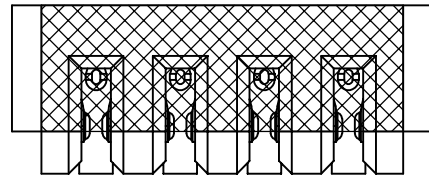
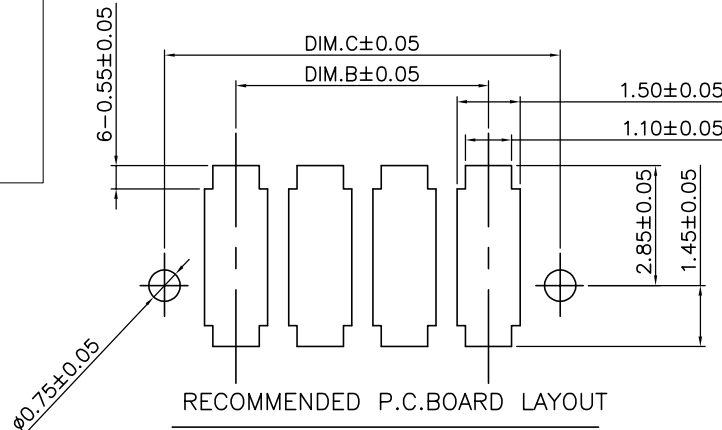
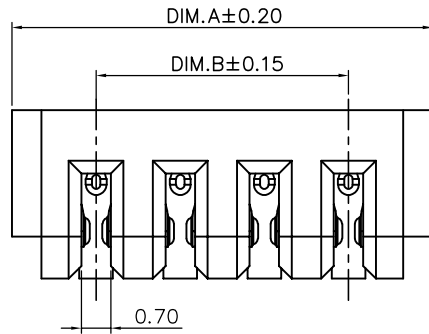


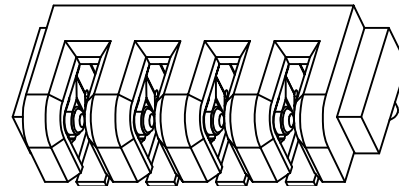
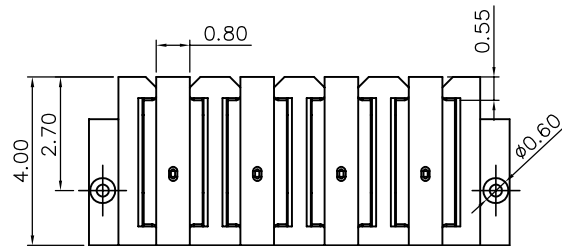
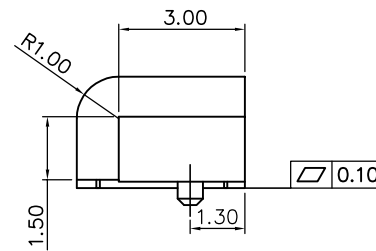
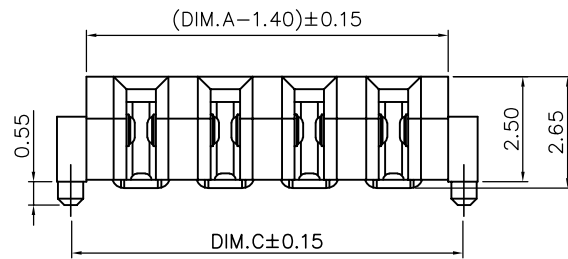
REV	LTR	Description	Date	Approved
1.0		新版发行	2016/09/20	LIU MIAO



可选加MYLAR



RECOMMENDED P.C. BOARD LAYOUT



备注:

1. 材料: PA9T/LCP黑色, 磷铜镀金;
1. 额定电压: AC/DC 30V Max
2. 绝缘耐压: AC 1000V 1 MINUTE, 无损伤
3. 绝缘电阻: DC 500V 1 MINUTE, 1000MΩ Min
4. 操作温度: -20° to +80°
5. 料号说明: MPB-AF01-K XX - X

M:MYLAR

03:3PIN
04:4PIN
.....

Table

P / N	Dim. A	Dim. B	Dim. C
03pin	8.00	4.00	7.35
04pin	10.00	6.00	9.35
05pin	12.00	8.00	11.35
06pin	14.00	10.00	13.35
07pin	16.00	12.00	15.35
08pin	18.00	14.00	17.35
09pin	20.00	16.00	19.35
10pin	22.00	18.00	21.35

WFD 深圳市旺富达电子有限公司
CONN SHEN ZHEN WFD ELECTRONICS CO., LTD

DRAW: LIU MIAO	TOLERANCES .0 ±0.38 .00 ±0.25 .000 ±0.10	◎	TITLE: 2.0 PITCH 电池座母座
CHKD:	ANG ±2°	SHEET: 1/1 UNIT: MM	PART NO.: MPB-AF01-KXX-X
APPD:		SCALE: 1:1 SIZE: A4	DWG NO.: REV 1.0