



**SPECIFICATIONS**

Rated(额定参数): 300V,15A

Dielectric strength(抗电强度): AC1600V/1 Minute

Insulation Resistance(绝缘电阻):1000MΩ Min

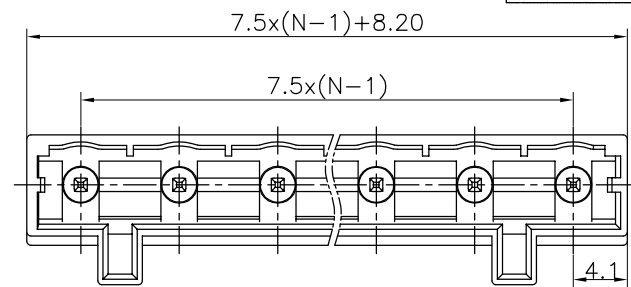
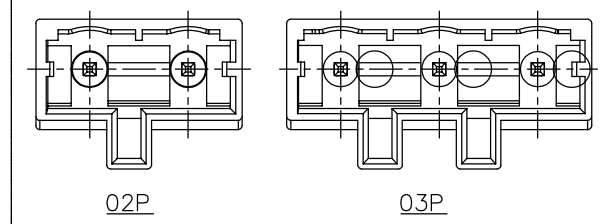
Contact Resistance(接触电阻):20mΩ Max

Temp. range(操作温度): -40℃~+105℃

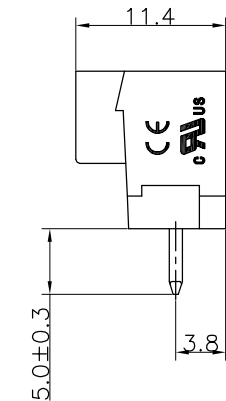
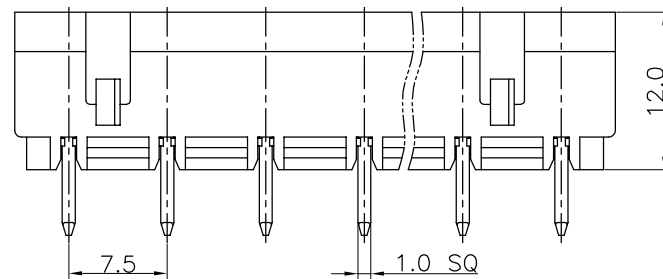
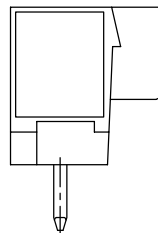
MAX Soldering(瞬时温度):+250℃,5s

Housing Material(塑件): PA66 (UL94 V-0)

Contact(端子): Brass, Tin plating(黄铜镀锡)



PITCH RANGE IN MM			NOMINAL DIMENSION RANGE IN MM				
TO	OVER	OVER	TO	OVER	OVER	OVER	OVER
6	6 TO 10	10 TO 24	30	30 TO 60	60 TO 100	100 TO 150	150
±0.10	±0.15	±0.25	±0.30	±0.30	±0.50	±0.70	±1.00



**Ordering Information**

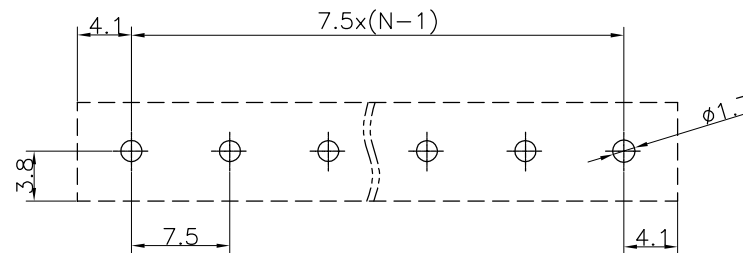
**WFD8EDGVCB - 750 XX X X 1**

Pitch  
750=7.50PH  
762=7.62PH

No.of pins  
2P~12P

Housing Color  
B=Black  
G=Green  
U=Blue  
R=Red  
W=White  
Y=Yellow  
O=Orange  
E=Grey

Packing  
O=Pe bag  
A=Tray  
T=Tube



Recommended P.C.B Layout(Top Side)

				OPERATION		DRAW	LIU MIAO	20.07.27	SCALE	FIT	<b>WFD</b> CONN 深圳市旺富达电子有限公司 SHEN ZHEN WFD ELECTRONICS CO., LTD	
				X.X	±0.30			UNIT	mm			
				X.XX	±0.20	CHECK			SIZE	A4	PART NO.	WFD 8EDGVCB-750XXXX1
A0	2020.07.27	NEW DRAWING		X.XXX	±0.10			SHEET	1/1	TITLE:	7.5mm Pitch Male Pluggable Terminal Blocks	
REV	DATE	MODIFICATION DESCRIPTION		ANGLE	±3°	APPROVE			PROJ.			
			CHANGE	DIM	TOL							