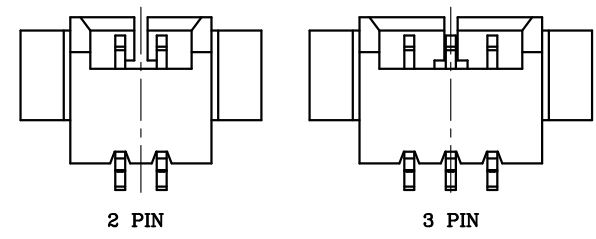
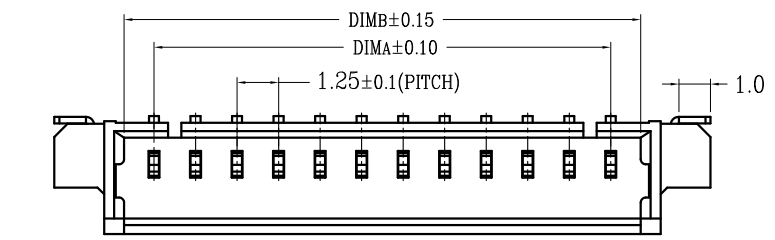
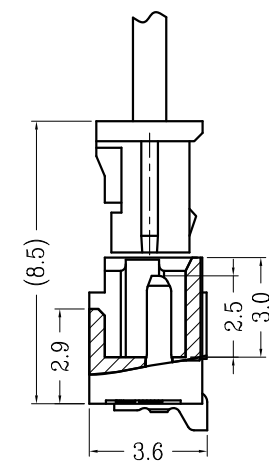
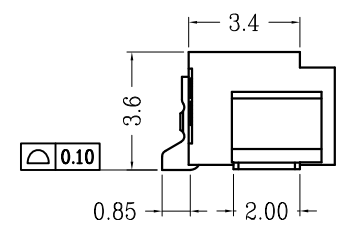
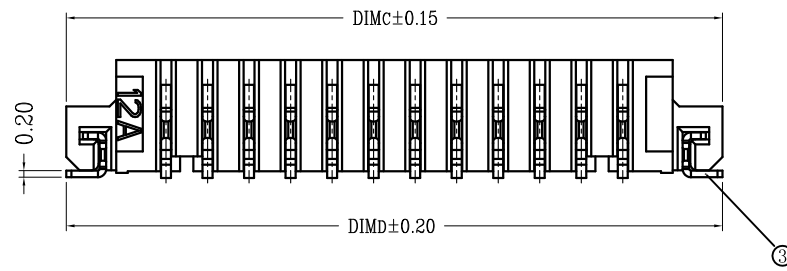
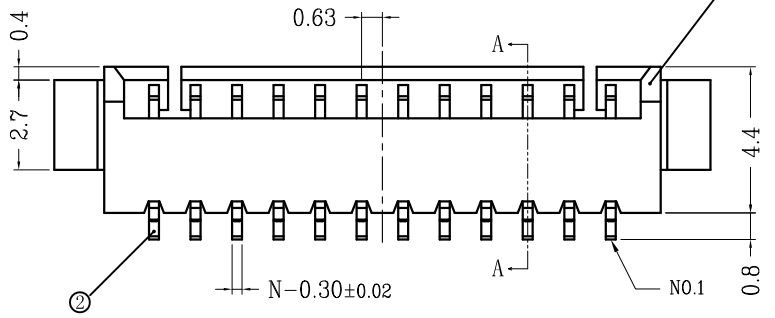
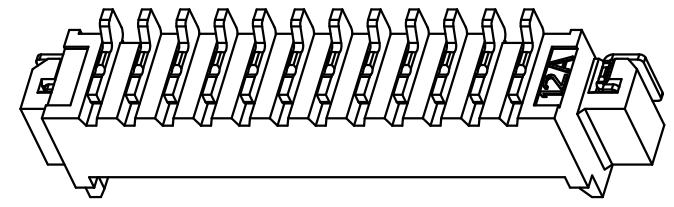


版次	变更摘要	日期	序号	品名	材质
0	新产品发行	2015/01/28	①	1.25 A型卧式WTB胶芯	LCP UL94V-0 本色
			②	1.25 A型卧式WTB端子	铜合金/表面镀锡
			③	1.25 A型卧式WTB焊片	铜合金/表面镀锡

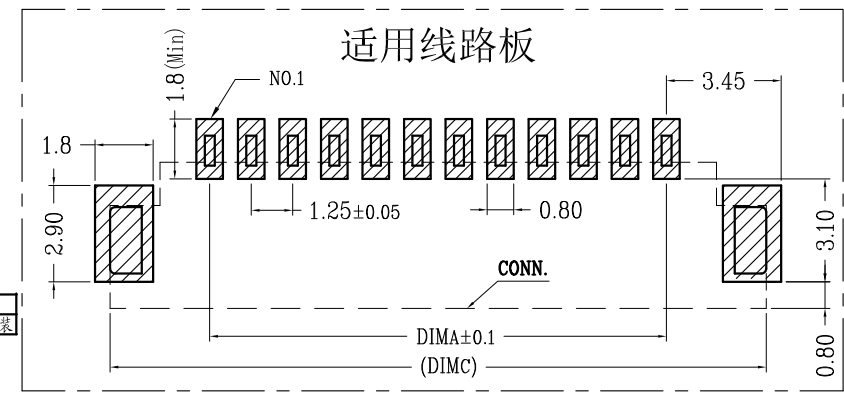


LOCK CONFIGURATION (锁扣结构)



CKT	DIM A	DIM B	DIM C	DIM D
2	1.25	3.05	7.25	7.25
3	2.50	4.30	8.50	8.50
4	3.75	5.55	9.75	9.75
5	5.00	6.80	11.00	11.00
6	6.25	8.05	12.25	12.25
7	7.50	9.30	13.50	13.50
8	8.75	10.55	14.75	14.75
9	10.00	11.80	16.00	16.00
10	11.25	13.05	17.25	17.25
11	12.50	14.30	18.50	18.50
12	13.75	15.55	19.75	19.75
13	15.00	16.80	21.00	21.00
14	16.25	18.05	22.25	22.25
15	17.50	19.30	23.50	23.50
16	18.75	20.55	24.75	24.75
17	20.00	21.80	26.00	26.00
18	21.25	23.05	27.25	27.25
19	22.50	24.30	28.50	28.50
20	23.75	25.55	29.75	29.75

- 技术指标:
1. 塑件表面应光洁、无毛边、无明显收缩、缺陷、裂纹等现象。
 2. 锁扣窗口: 2~3PIN为1个, ≥4PIN为2个。
 3. 温度范围: -25° C~85° C.
 4. 额定电压: 125V, AC.
 5. 接触电阻: ≤20mΩ(Initial) per contact, ≤40mΩ Change allowed.
 6. 绝缘电阻: ≥100MΩ.
 7. 产品料号:



WFD-125AW—** * *—**

NO OF CKT (产品PIN数) **OW** 胶芯无LOGO
MS 胶带步距16mm, 1500只包装

Plating (电镀方式) Packing (包装方式)

0: 端子全雾锡 T: TUBE管装
1: 端子全金 (G/F OVERALL) R: TAPE & REEL卷装
4: 端子全亮锡



一般公差 (TOLERANCE)
X ±.50 .XX ±.10
X ±.20 .XXX ±.05
ANGLES ±1°

WFD 深圳市旺富达电子有限公司
CONN SHEN ZHEN WFD ELECTRONICS CO., LTD

品名 (TITLE) 1.25 Pitch A型卧式WTB 制图 (DR) LIU MIAO
校对 (CHKD)

料号 (DWG.NO) WFD-125AW-024R-0W 审核 (APPD)

比例 (SCALE) 1:1 单位 (UNITS) mm 张数 (SHEET) 1 OF 1 SIZE A4 REV A