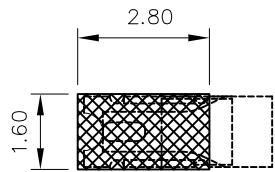
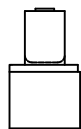
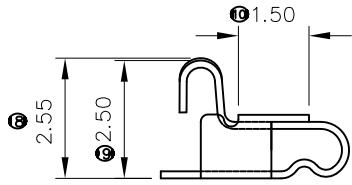
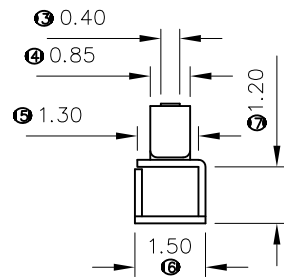
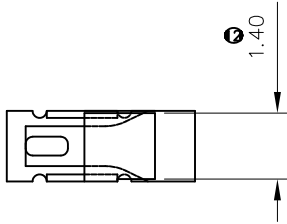
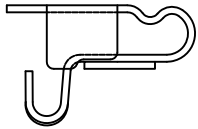
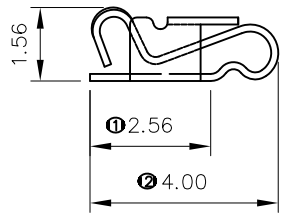
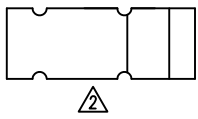


RoHS
Compliant

REV	DESCRIPTION	APPR	CHECK	DRAW	DATE
①	原始图档			Liu Miao	110815
②	PCB焊盘变更			Liu Miao	120906
③	取消贴板面圆孔			Liu Miao	121011



PCB LAYOUT



- 电气性能
 - ▲接触电阻 $\leq 100m\Omega$
 - ▲额定电压 15VAC/DC/MAX
 - ▲额定电流 1.0A/MAX
 - ▲耐压 500V AC/1分钟
 - ▲绝缘电阻 $\geq 1000M\Omega/min$
- 机械特性
 - ▲触点正向压力: $0.5 \pm 0.2N/pin$, 压缩到工作高度1.0mm
 - ▲插拔寿命 5000次
 - ▲机械寿命 正向压缩端子到0.55mm高度 ≥ 500 次
- 工作温湿度 $-25^{\circ}C \sim +85^{\circ}C/5 \sim 85R.H.$
- 储存温湿度 $-40^{\circ}C \sim +85^{\circ}C/5 \sim 95R.H.$
- 产品需高温测试
耐焊接热 焊接温度在 $260^{\circ}C$ 时, 要求10s不变形, 起泡
- 平面度要求
▲端子焊脚与铁壳焊脚的平面度 $\leq 0.1mm$
- 成品功能要求面不可有端子压伤之不良现象
- 产品符合ROHS标准
- 产品采用载带包装。

QUALITY SYMBOLS	GENERAL TOLERANCES (UNLESS SPECIFIED)		SCALE: 1:1	NUMBER:	WFDconn 深圳市旺富达电子有限公司 Shenzhen WFD Electronics Co., Ltd.
	MM	INCH	MATERIAL:	HRC:	
▽ ⁰	.X	± 0.25	.X	①-----	TITLE: 天线顶针2.55H
	.XX	± 0.15	.XX	②-----	
	.XXX	± 0.05	.XXX	③-----	
▽ ^C	ANGULAR $\pm 1^{\circ}$		DRAWN BY: Liu Miao	DATE: 110815	THIRD ANGLE PROJECTION
	DRAFT WHERE APPLICABLE MUST REMAIN WITHIN DIMENSIONS		CHECKED BY: SIMON	DATE: 110815	
			APPROVED BY:	DATE:	PART NO. WFD-3001M2160015-3(2.55H)
					DWG NO. 3001M
					SHEET NO. 1/1