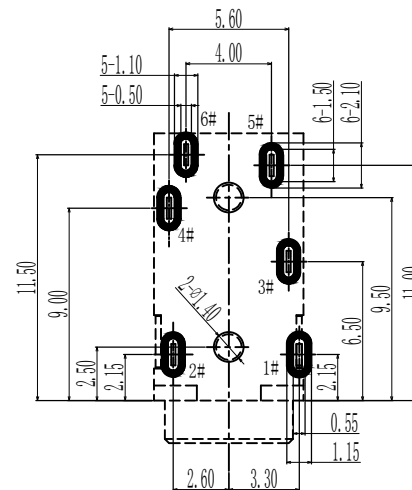
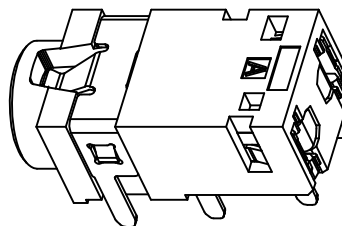
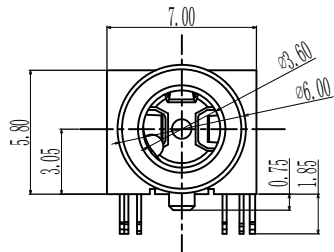
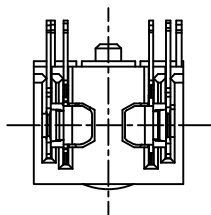
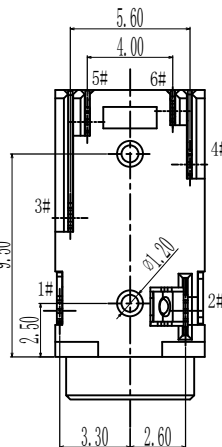
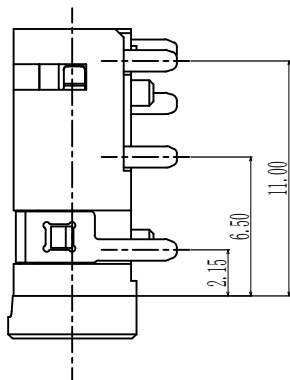
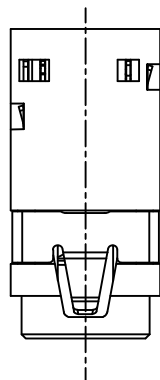
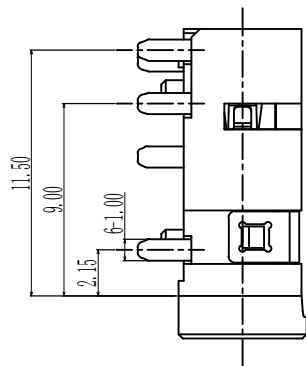


RoHS Compliant

Halogen Free



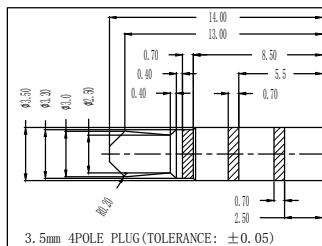
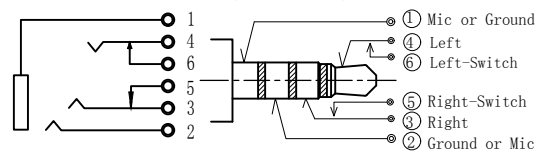
RECOMMEND PCB LAYOUT
TOLERANCE: ±0.05



Notes:

1. Current Rating: 12V&1A max.
2. Contact Resistance: 30mOhms Max. (initial)
3. Insulation Resistance: 100M Ohms Min./500V DC
4. Dielectric Withstanding Voltage: 500V AC/1Minute
5. Mating Force: 30N Max, Withdrawal Force: 3N Min.
6. Durability: 5,000 Cycles
7. Operating Temperature: -25° C to +85° C

3.5mm 4Pole Plug Circuit Diagram



7	Housing	PPA	Black&HB
6	Left-Switch	Copper Alloy	G/F On Contact Area G/F On Solder Tails Ni Plated Overall.
5	Right-Switch		
4	Left Contact		
3	Right Contact		
2	Mic or Ground		
1	Ground or Mic		
Item	Name	Material	Description
UNLESS OTHERWISE, GENERAL TOLERANCE:			
X. xx		±0.15	
X. x		±0.20	
X.		±0.30	
ANGULAR:			
X. x		±1°	
X.		±2°	
TITLE:		P/N: MPJ-06C36-06-G-002	
3.5mm Audio Jack Conn. 4Pole W/ 2Switch H5.75(CH=3.05)		MODEL:	
THIRD ANGLE PROJECTION		UNIT:	SCALE: SIZE: SHEET:
		mm	1:1 A4 1/1

DESIGN	Liu Miao	2020.07.10			
CHECK	SIMON	2020.07.10			
APPROVAL	DAVID	2020.07.10			
ECN NO.	REV.	DESCRIPTION	DATE	CHANGE	

WFD 深圳市旺富达电子有限公司
Shenzhen WFD Electronics Co.Ltd.