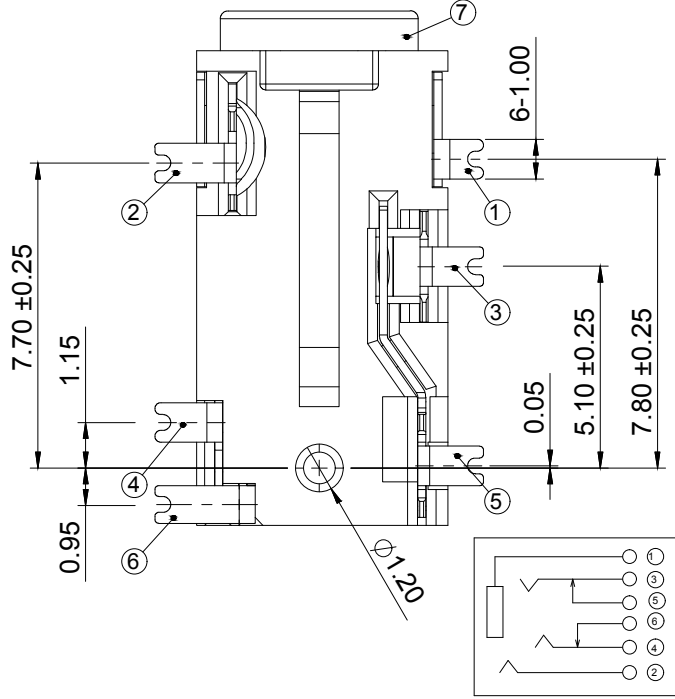
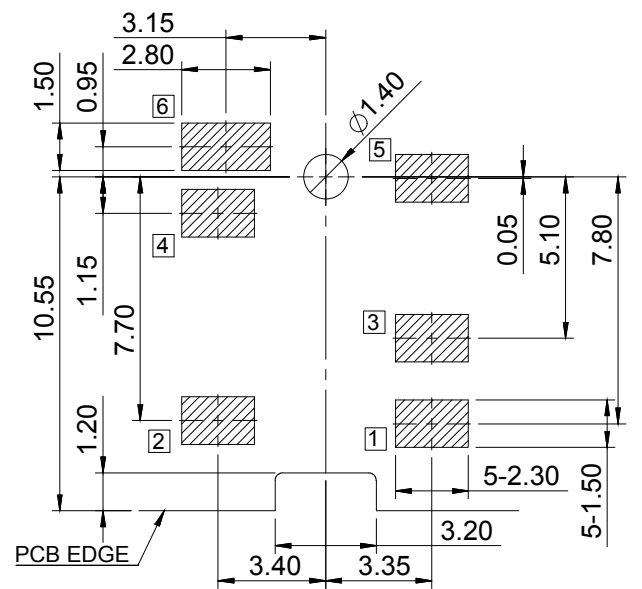
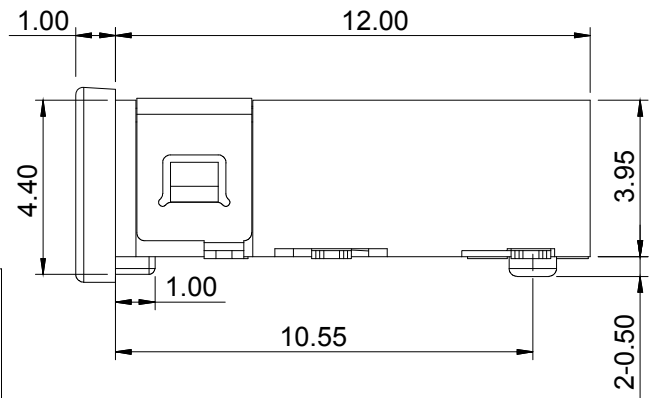


**Ø3.50mm 4 POLE PLUG
DETAIL DRAWING(2:1)**



SCHMATIC



**RECOMMENDED PCB LAYOUT(TOP VIEW)
(GENERAL TOLERANCE ±0.05)**

- NOTES:
 1. CONTACT CURRENT RATING: 1A.
 2. CONTACT RESISTANCE: 50 mΩ MAX.;
 3. INSULATION RESISTANCE: 100MΩ MIN.;
 4. DIELECTRIC WITHSTANDING: 500V AC MIN.;
 5. DURABILITY: 5,000 CYCLES MIN.;
 6. CONNECTOR MATING FORCES:
 29.4N (3.00Kgf) MAX.;
 7. CONNECTOR UNMATING FORCES:
 2.94N(0.30Kgf) MIN.;

NO.	DESCRIPTION	MAT.L	COLOR	REMARK
7	HOUSING	HIGH TEMP	BLACK	
6	TERMINAL 6	COPPER ALLOY		Au PLATED
5	TERMINAL 5	COPPER ALLOY		Au PLATED
4	TERMINAL 4	COPPER ALLOY		Au PLATED
3	TERMINAL 3	COPPER ALLOY		Au PLATED
2	TERMINAL 2	COPPER ALLOY		Au PLATED
1	TERMINAL 1	COPPER ALLOY		Au PLATED

CUSTOMER COPY **WFDconn** 深圳市旺富达电子有限公司
 Shenzhen WFD Electronics Co.Ltd..

TITLE:	Ø3.50 mm PHONE JACK CONNECTOR		
PART NO.	MPJ-06O358-06-G-006		
PRODUCT SPEC.	WFD-RD-W06		
FILE NAME.	J303YB06GF		
SCALE	5:1	UNIT:mm	A4
SHEET: 1 of 2			

ECN NO.	REV	DATE	DESCRIPTION	CHANGE	APPRO.	GENERAL TOLERANCE UNLESS OTHERWISE NOTED	DESIGN	DATE
						Angle ±2° X ±0.35 .X ±0.25 .XX ±0.20	Liu Miao	10/09/18
				SIMON	DAVID		CHECK	SIMON
							APPRO.	DAVID
								10/09/18

X1 10/09/18 新版发行