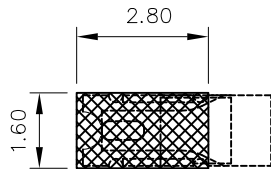
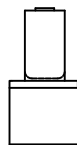
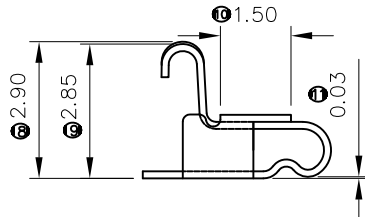
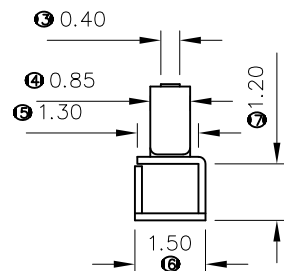
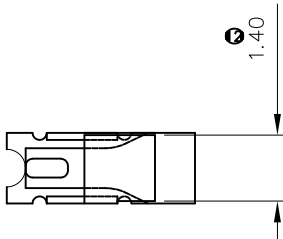
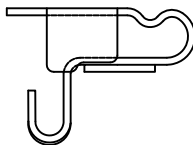
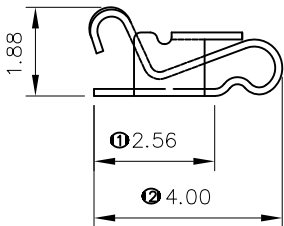
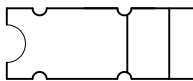


RoHS Compliant

REV	DESCRIPTION	APPR	CHECK	DRAW	DATE
△	原始图档			Liu Miao	110815
△	PCB焊盘变更			Liu Miao	120906
△	取消贴板面中间圆孔, 改善平面度			Liu Miao	121009



PCB LAYOUT



- 电气性能
 - ▲接触电阻 $\leq 100m\Omega$
 - ▲额定电压 15VAC/DC/MAX
 - ▲额定电流 1.0A/MAX
 - ▲耐压 500V AC/1分钟
 - ▲绝缘电阻 $\geq 1000M\Omega/min$
- 机械特性
 - ▲触点正向压力: $0.5 \pm 0.2N/pin$, 压缩到工作高度1.0mm
 - ▲插拔寿命 5000次
 - ▲机械寿命 正向压缩端子到0.55mm高度 ≥ 500 次
- 工作温湿度 $-25^{\circ}C \sim +85^{\circ}C/5 \sim 85R.H.$
- 储存温湿度 $-40^{\circ}C \sim +85^{\circ}C/5 \sim 95R.H.$
- 产品需高温测试
耐焊接热 焊接温度在260°C时, 要求10s不变形, 起泡
- 平面度要求
▲端子焊脚与铁壳焊脚的平面度 $\leq 0.1mm$
- 成品功能要求面不可有端子压伤之不良现象
- 产品符合ROHS标准
- 产品采用载带包装。

QUALITY SYMBOLS	GENERAL TOLERANCES (UNLESS SPECIFIED)		SCALE: 1:1	NUMBER:	WFD CONN 深圳市旺富达电子有限公司 Shenzhen WFD Electronics Co., Ltd..
	MM	INCH	MATERIAL:	HRC:	
▽0	.X	±0.25	.X	④----	TITLE: 天线顶针H=2.9
	.XX	±0.15	.XX	⑤----	
	.XXX	±0.05	.XXX	⑥----	
▽C0	ANGULAR ±1°		DRAWN BY DATE Liu Miao 110815		THIRD ANGLE PROJECTION REVISE ON CAD ONLY
	DRAFT WHERE APPLICABLE MUST REMAIN WITHIN DIMENSIONS		CHECKED BY DATE SIMON 110815		
			APPROVED BY DATE	PART NO. WFD-3001M2160015-4(H=2.9H)	DWG NO. 3001M
					SHEET NO. 1/1