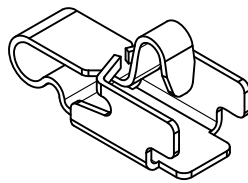
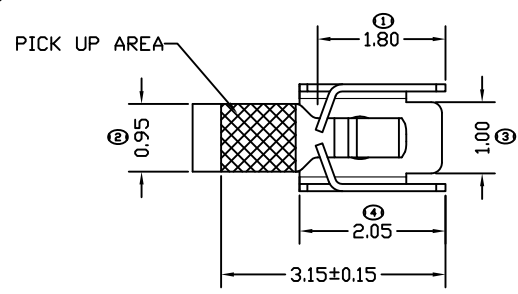
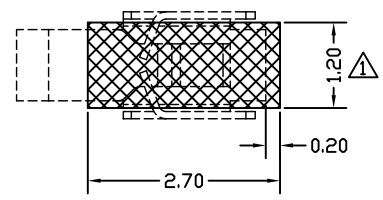
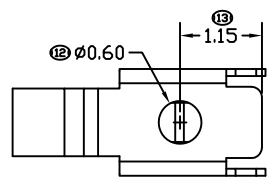
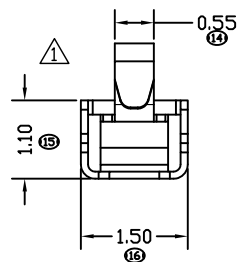
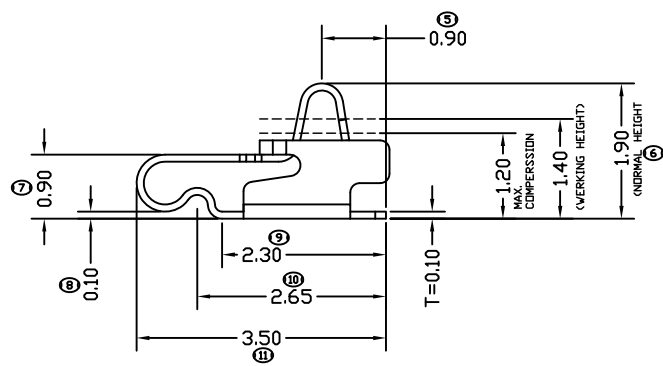


REV	DESCRIPTION	APPR	CHECK	DRAW	DATE
△	原始图档		SIMON	Liu Miao	120620

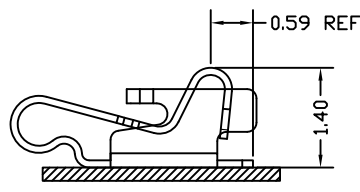
RoHS Compliant



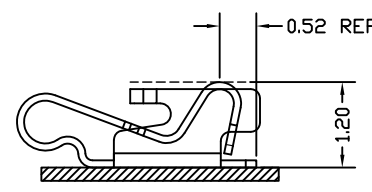
- PRODUCT NO.
- SPECIFICATIONS:
 - CONTACT RESISTANCE:80MΩ MAX
 - VOLTAGE RATING:1.5V/AC/DC/MAX
 - CURRENT RATING:1.0A/MAX
 - PRE-LOAD FORCE:0.5±0.1N ON CONTACT POINT
 - MAX.BEAM DEFLECTION:0.7±0.1N ON CONTACT POINT
 - DURABILITY:200 CYCLES
 - OPERATING TEMPERATURE:-20°C~80°C
 - MATERIAL:
 - STAINLESS STEEL SUS301 T=0.10MM
 - FINISH:
 - 1μ"AU ON CONTACT AREA
 - GOLD FLASH PLATING ON SOLDER AREA
 - 80μ" MIN. NICKEL UNDERPLATING OVERALL



P.C.B. LAYOUT
TOLERANCE: ±0.05



STATE AT WORKING HEIGHT(H=1.40)



STATE AT WORKING HEIGHT(H=1.20)

QUALITY SYMBOLS	GENERAL TOLERANCES (UNLESS SPECIFIED)		SCALE: 1:1	NUMBER:	WFDconn 深圳市旺富达电子有限公司 Shenzhen WFD Electronics Co.,Ltd.
		MM	INCH	MATERIAL: HRC:	
▽.0	.X	±0.25	.X	④----	TITLE: 1.9H 带扣弹片
▽C.0	.XX	±0.20	.XX	⑤----	THIRD ANGLE PROJECTION
	.XXX	±0.10	.XXX	⑥----	REVISE ON CAD ONLY
ANGULAR ±1°			DRAWN BY: Liu Miao		PART NO. WFD-3001M2160022-3
DRAFT WHERE APPLICABLE MUST REMAIN WITHIN DIMENSIONS			DATE: 120620		
			CHECKED BY: DATE:		DWG NO.
			APPROVED BY: DATE:		SHEET NO. 1/1